

TRANSFLEISCH

Piano

based on the audio-visual performance Transfleisch (by ... and Ulrich) In C

ensemble elektronik ID [transfleisch]

Musical notation system 1: Treble and bass clefs, 4/4 time signature, tempo marking '♩ = 120', dynamic markings 'mp' and 'mf', and performance instructions 'with bicycle tube'.

Musical notation system 2: Treble and bass clefs, dynamic markings 'f' and 'p', performance instruction 'with bicycle tube', and a 'SAMPLER B1 - pitched' box.

Musical notation system 3: Treble and bass clefs, starting at measure 35.

#2

© STEVE BAUCH / 2021

WWW.VISIONFOTOGRAFIE.DE
INFO@VISIONFOTOGRAFIE.DE
++49-173-5687355

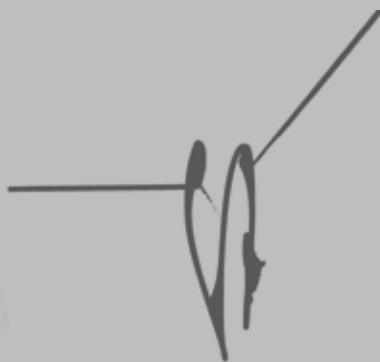
14/21 [ensemble elektronik ID / transfleisch / #2]

[musikwerk köln: 2021]

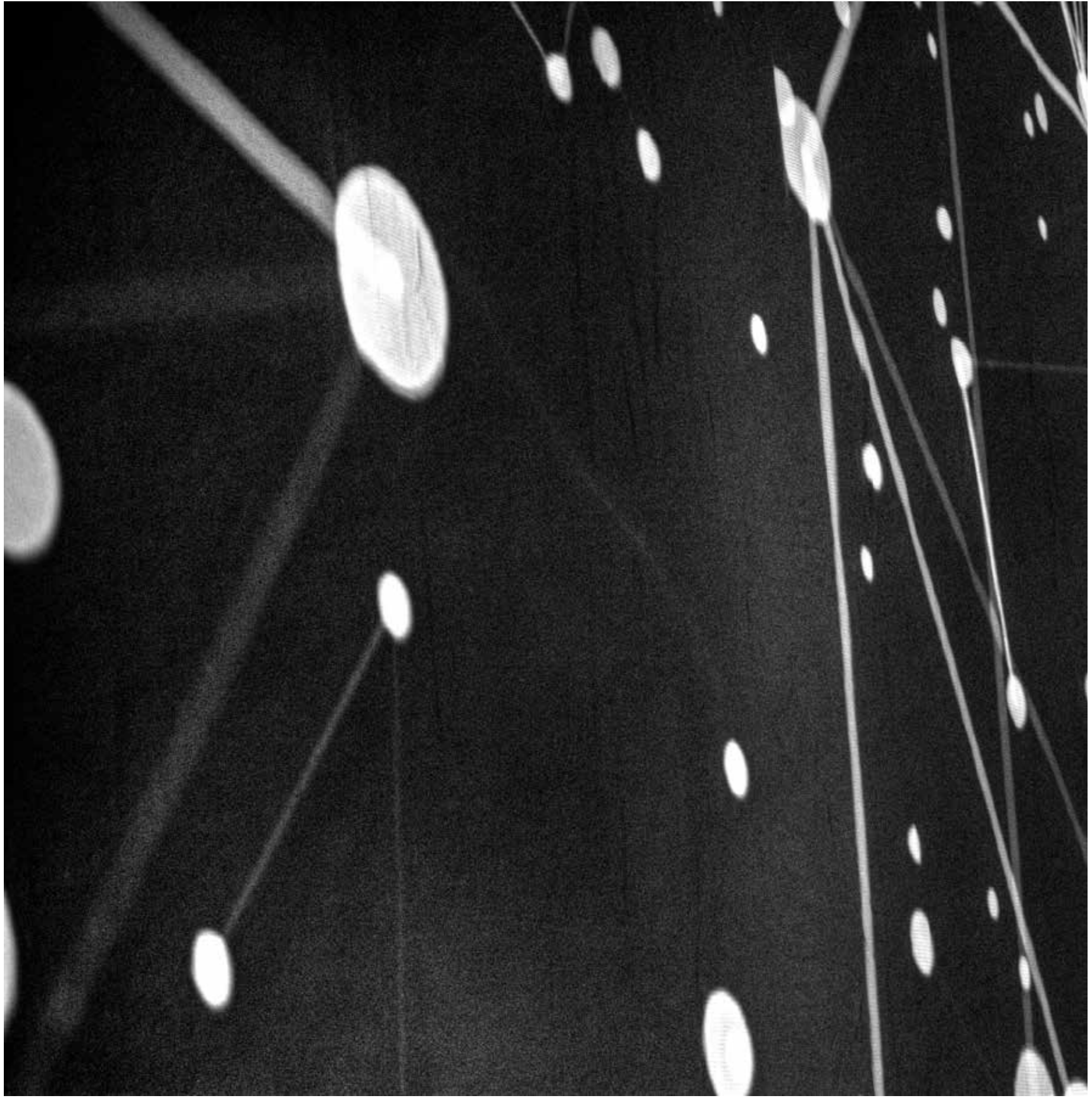
n°14/21
cologne
202

ensemble elektronik ID [transfleisch]

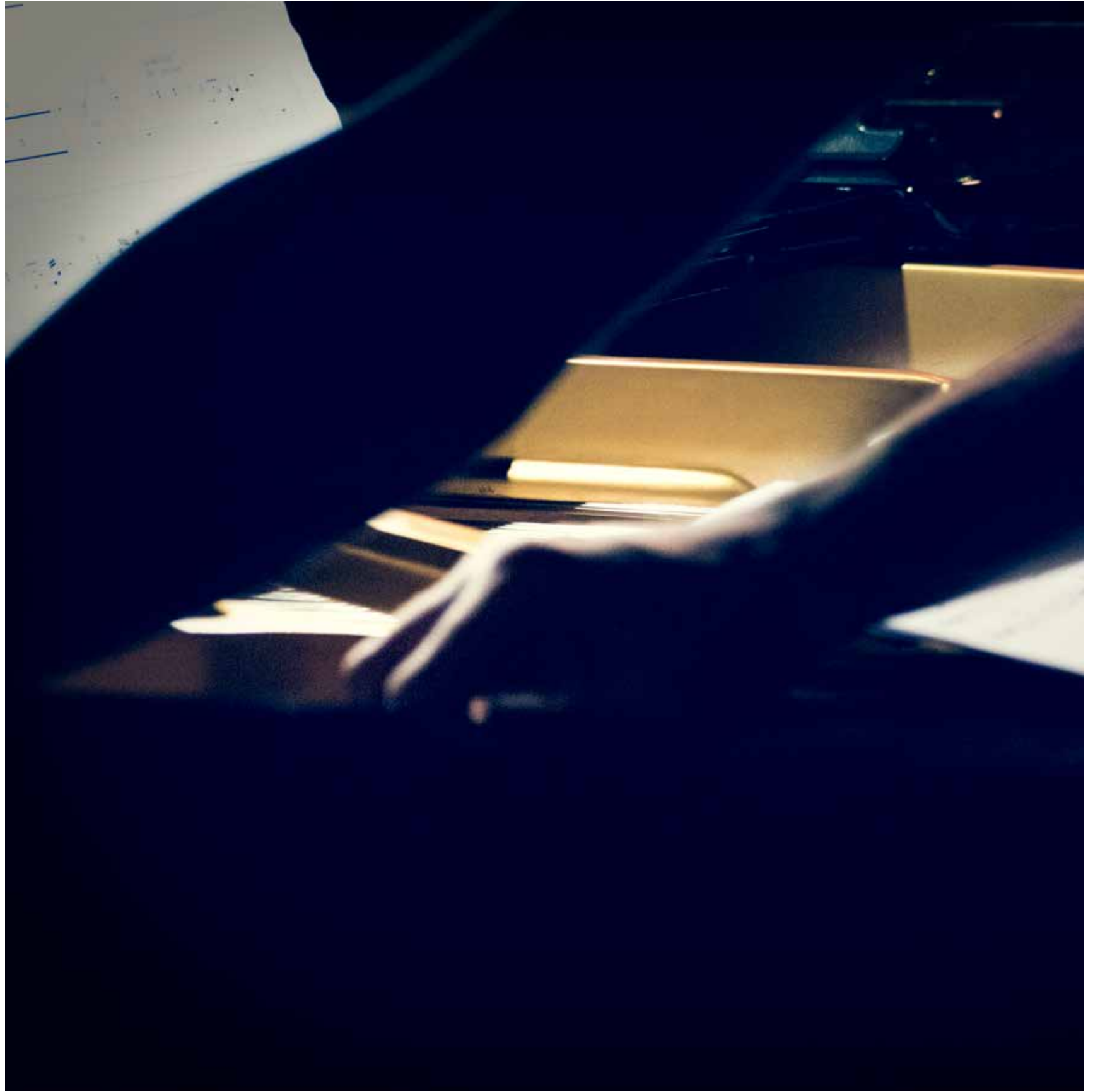
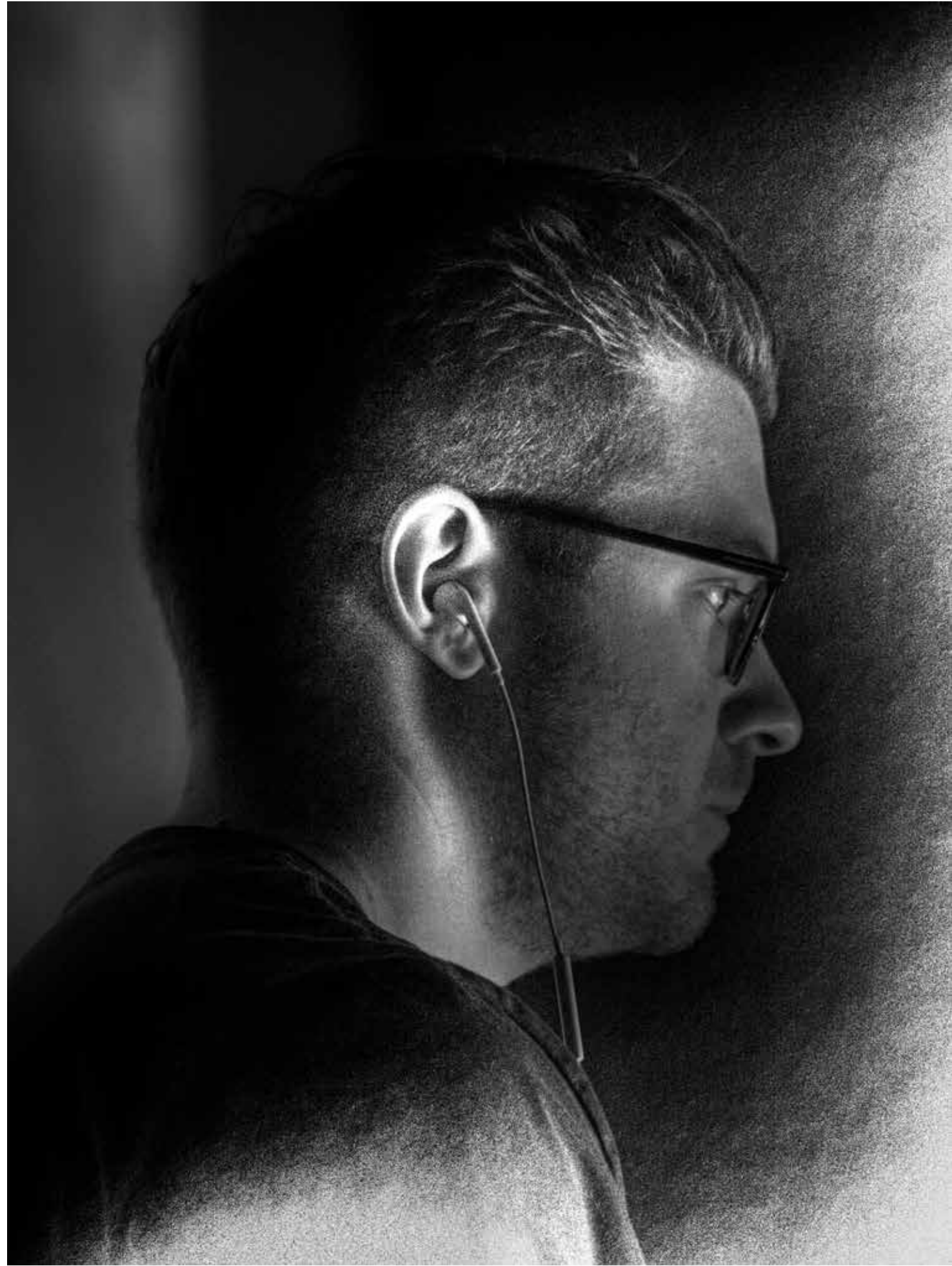
#2



[musikwerk köln: 2021]

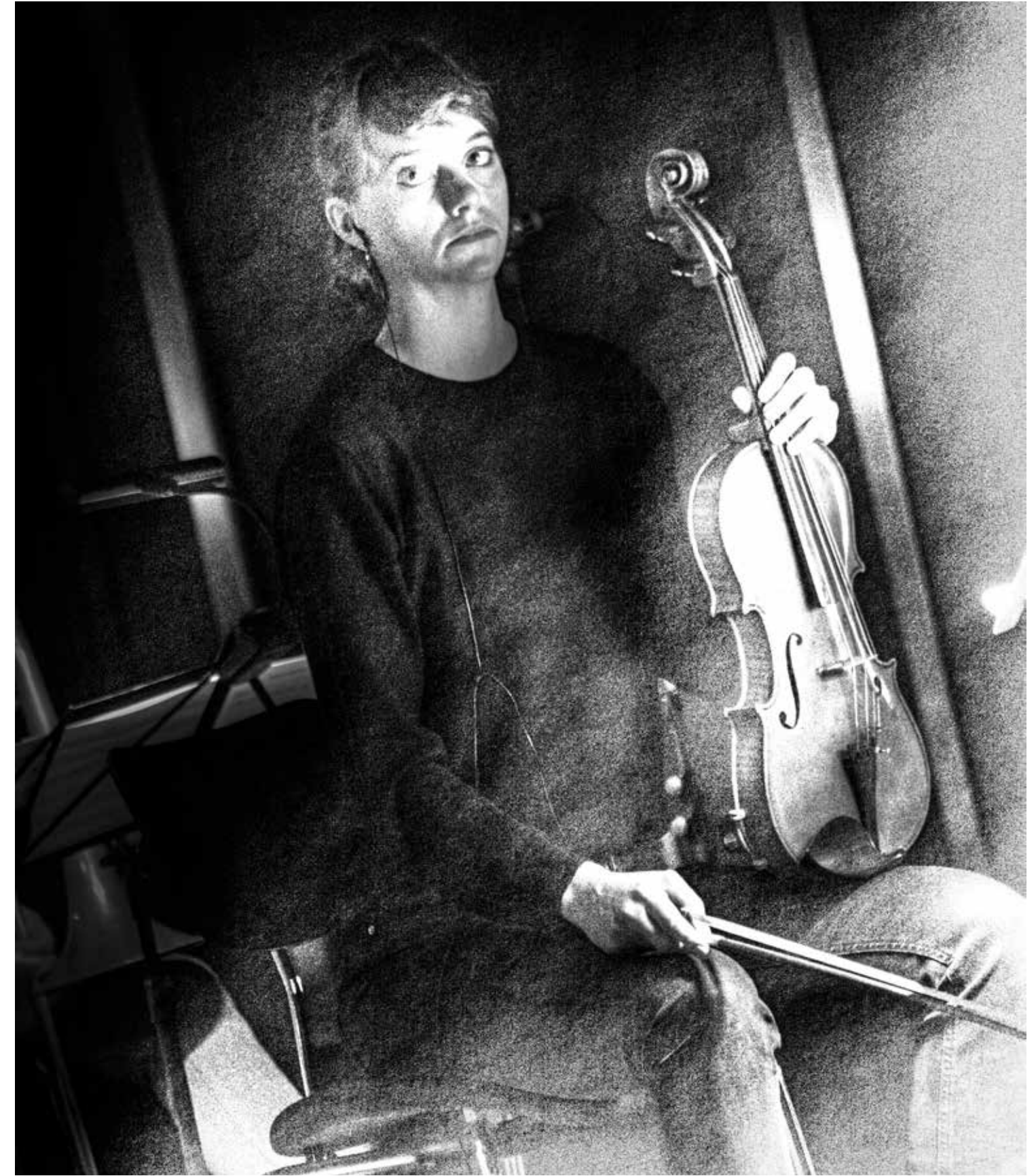
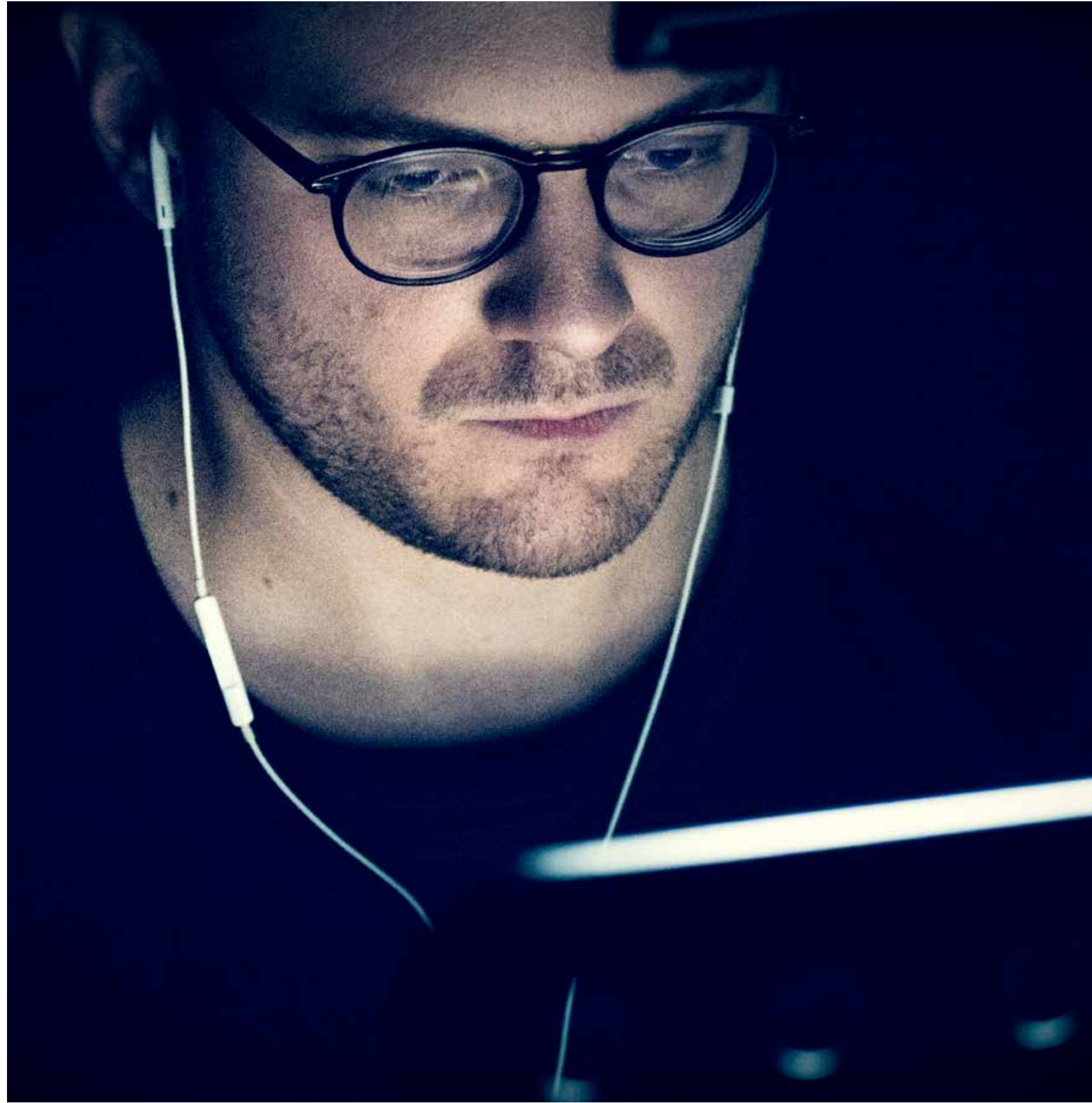




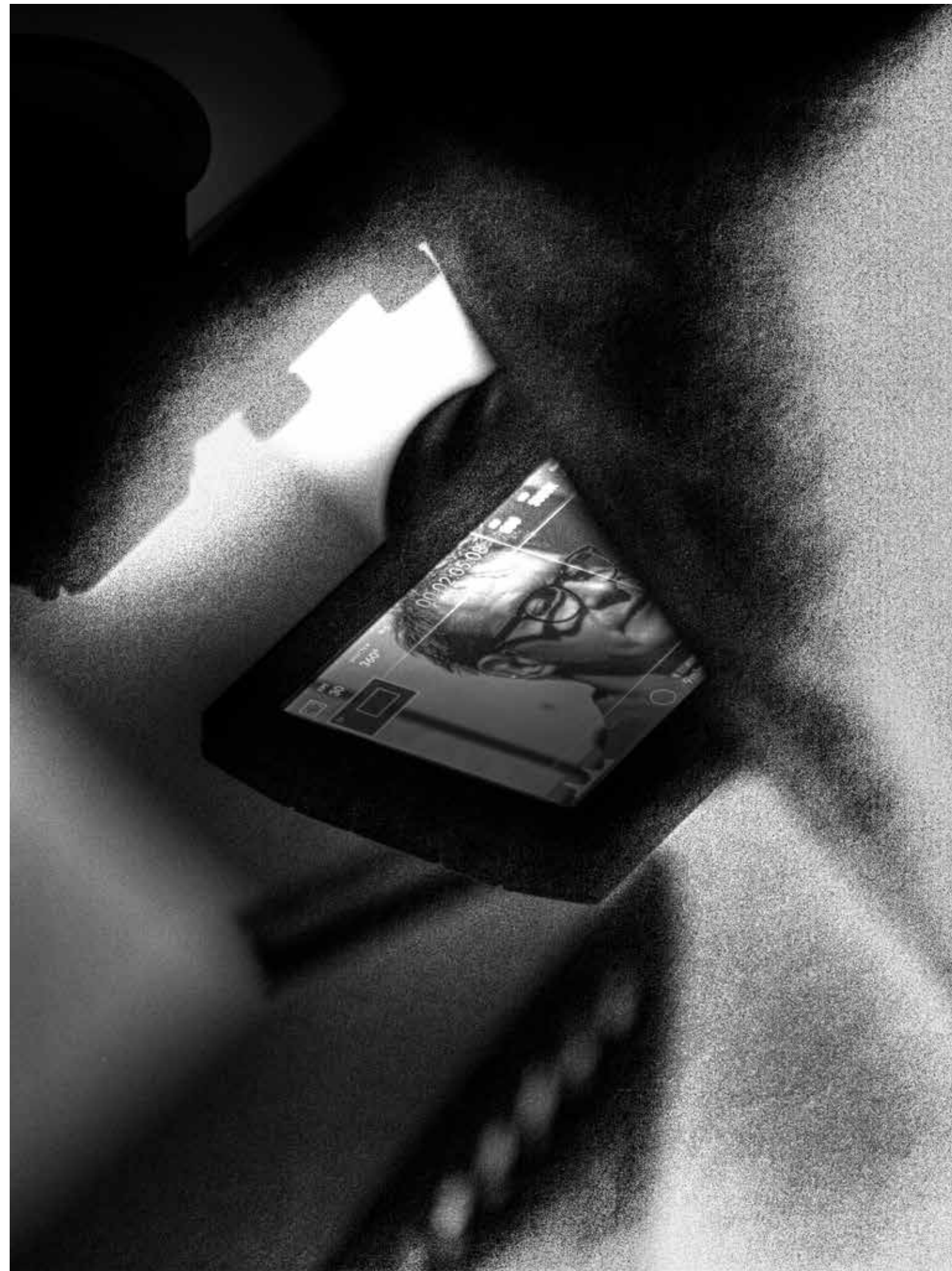


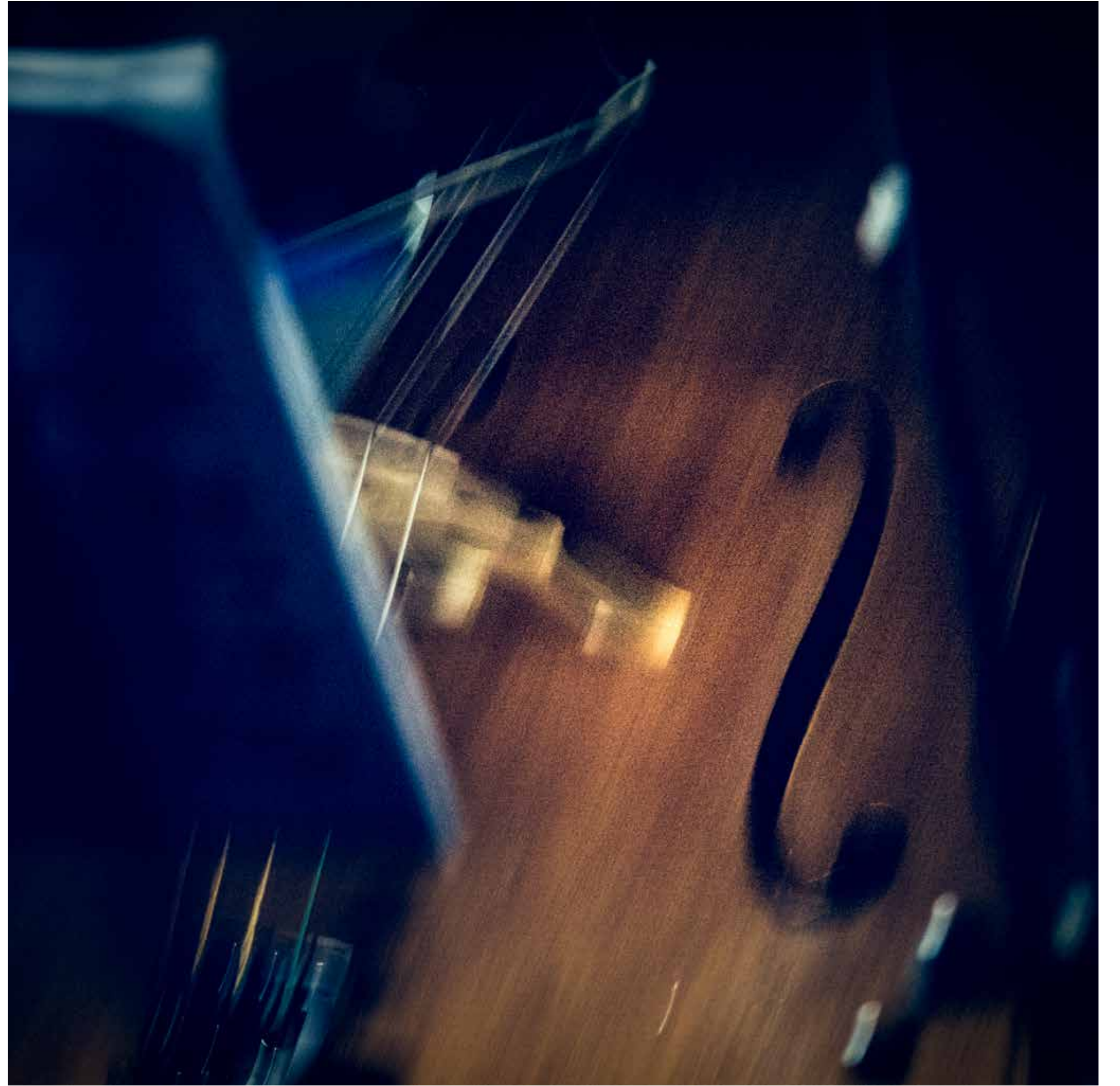
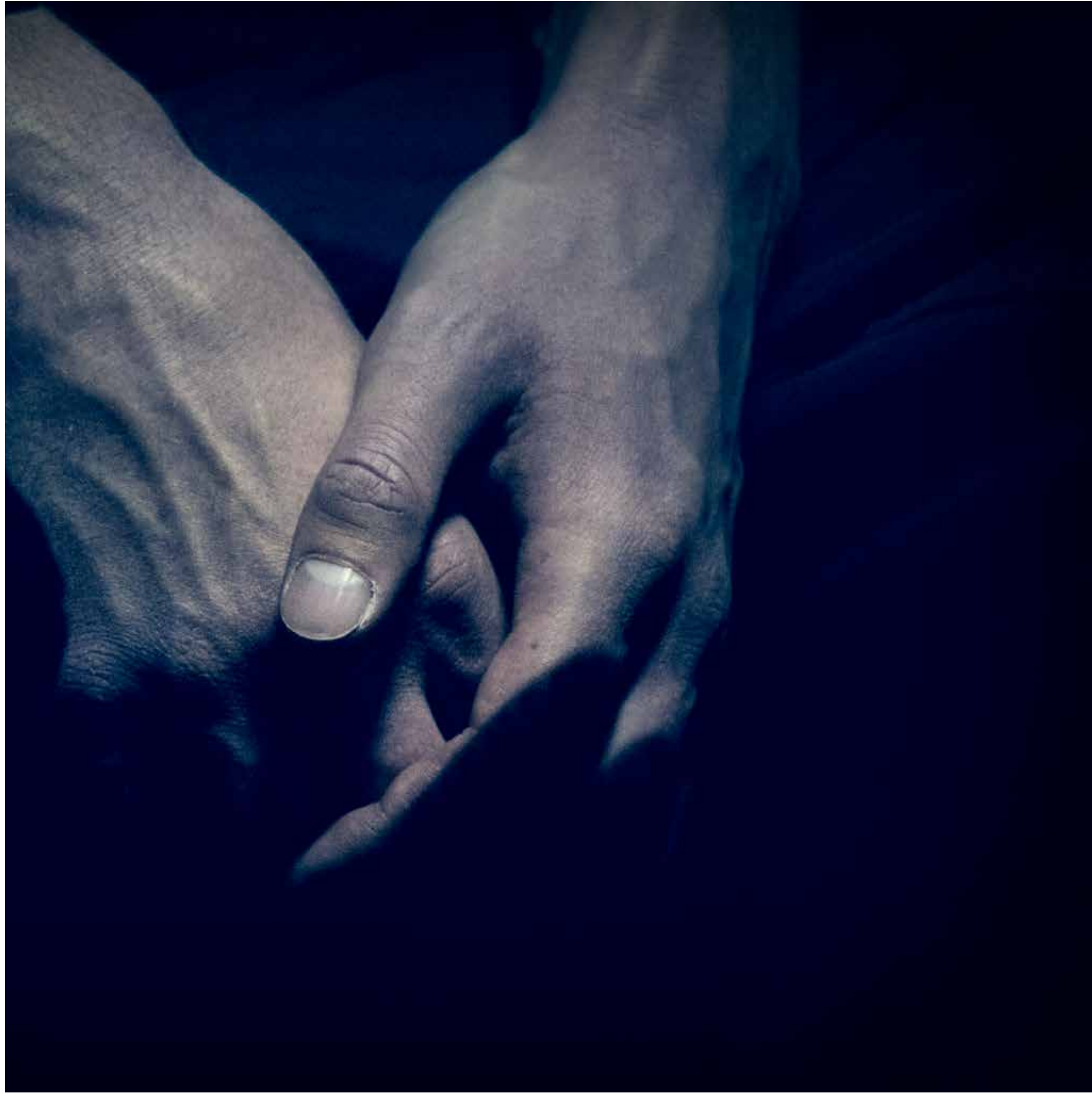




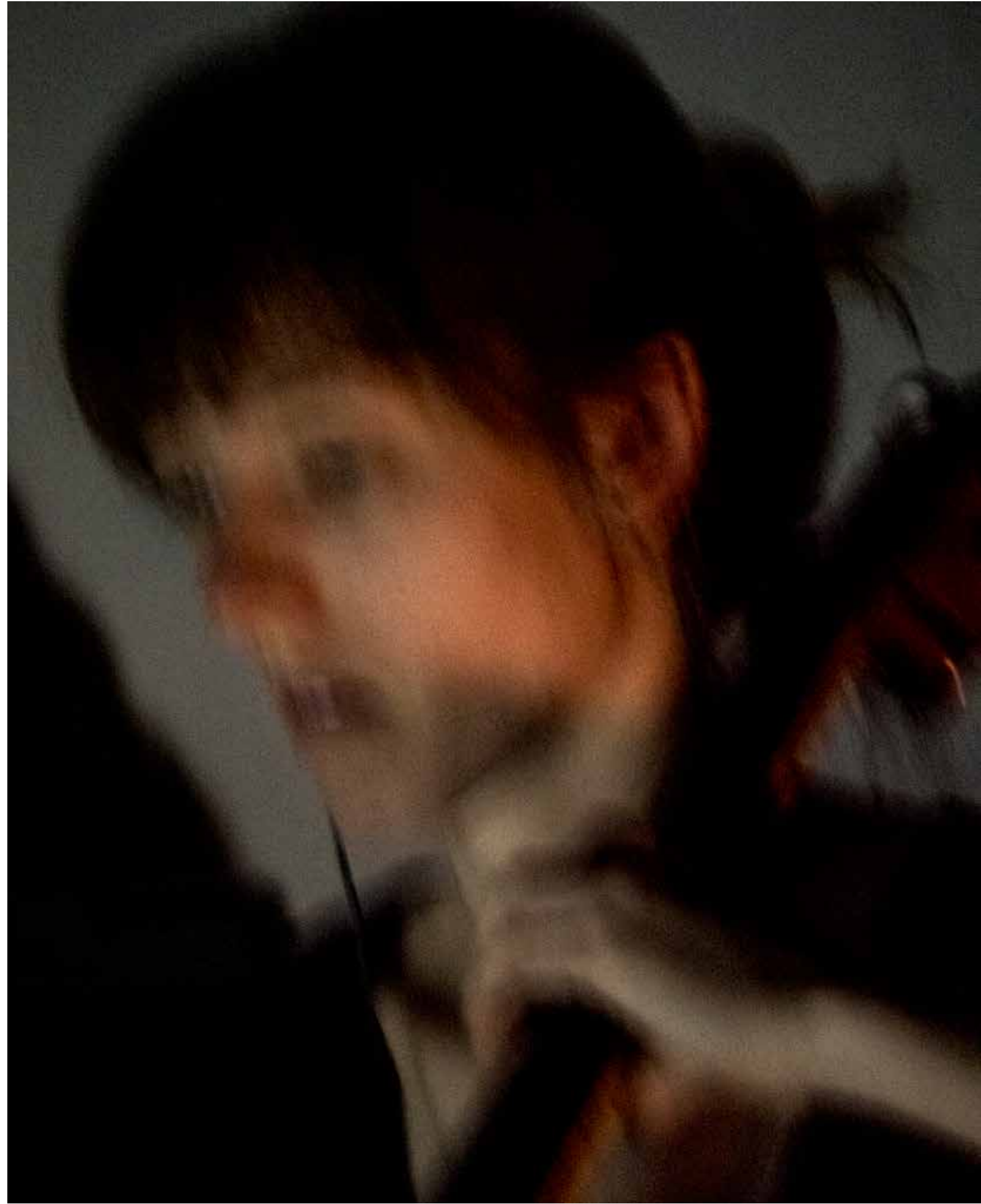


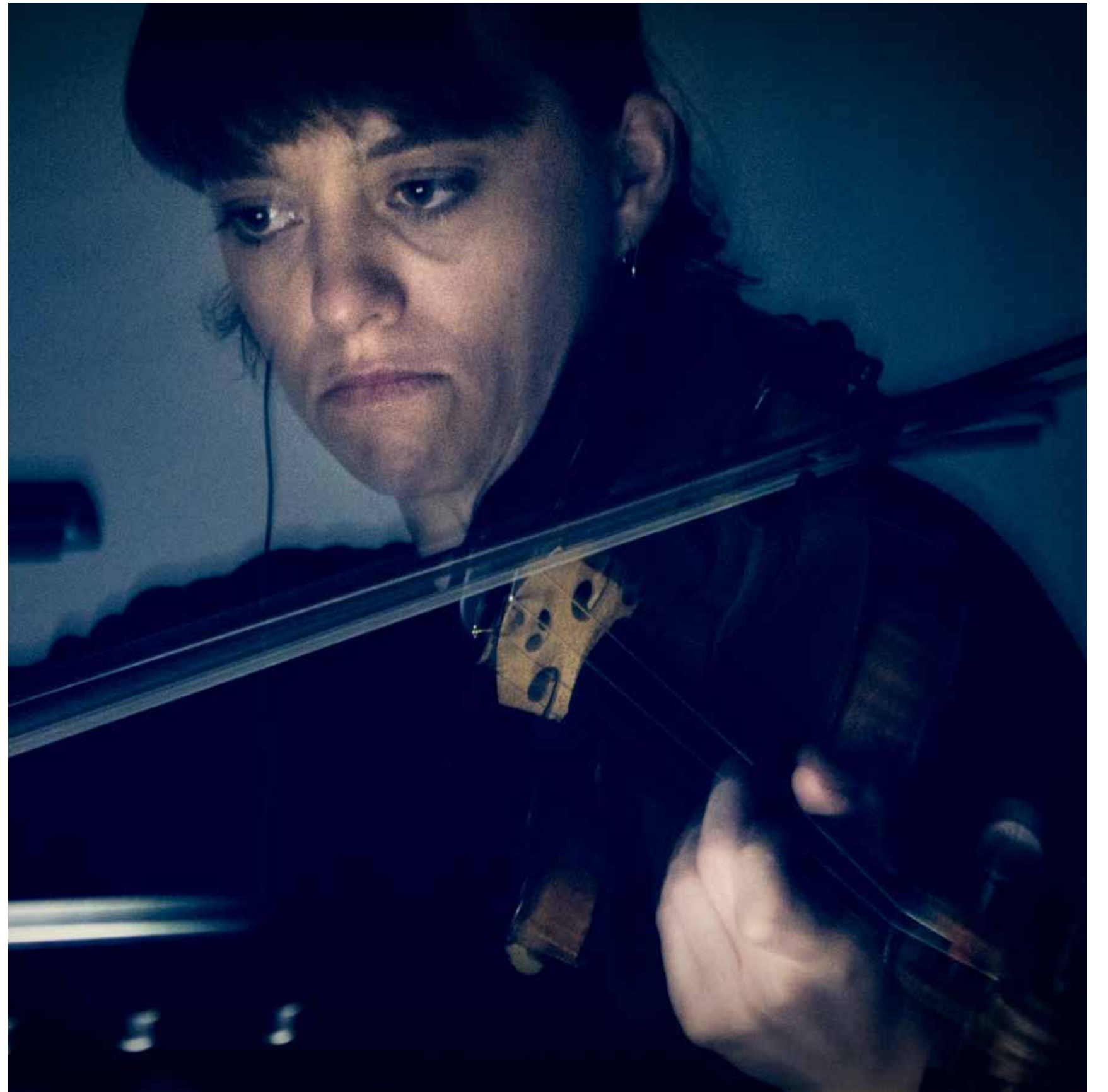




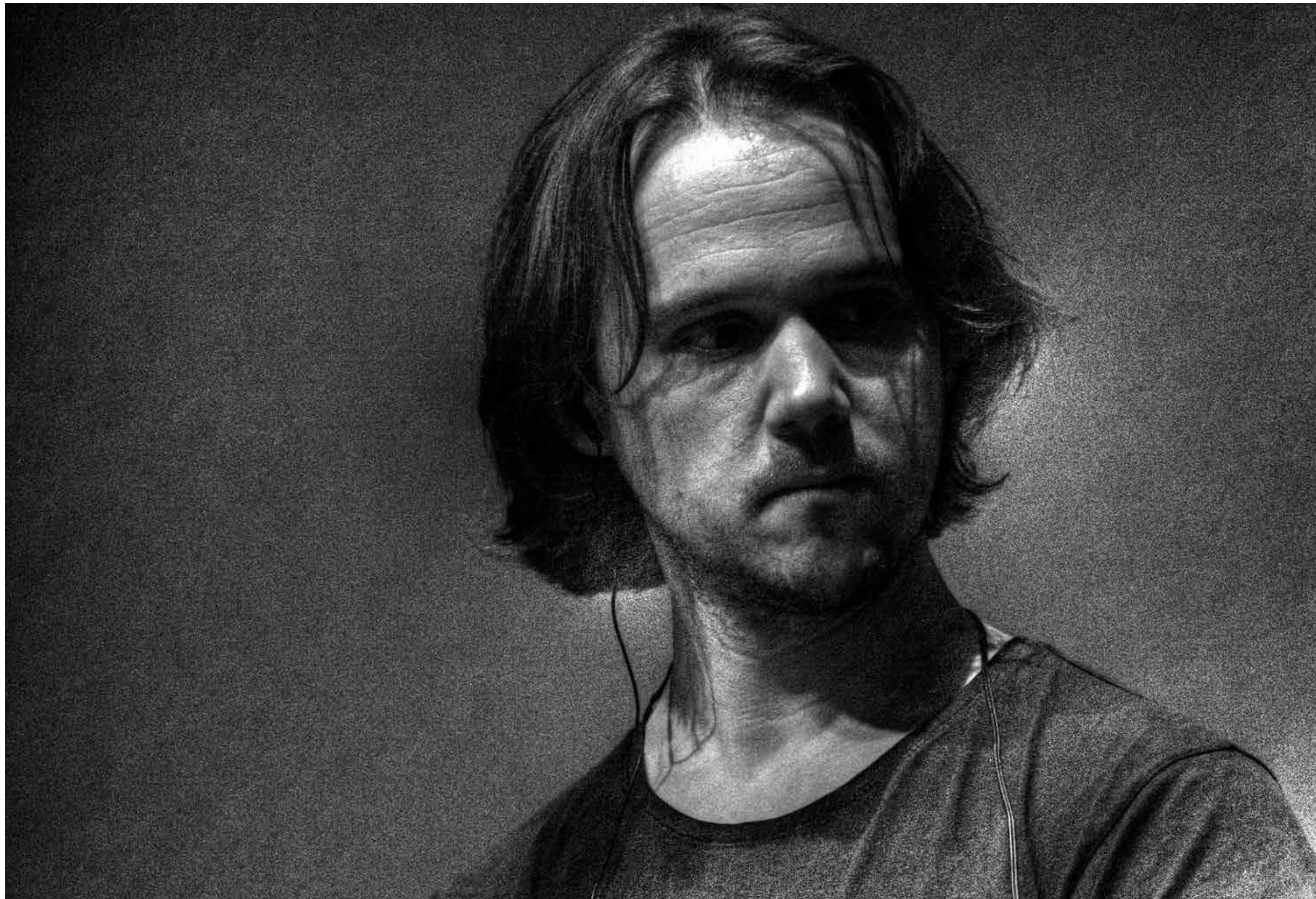






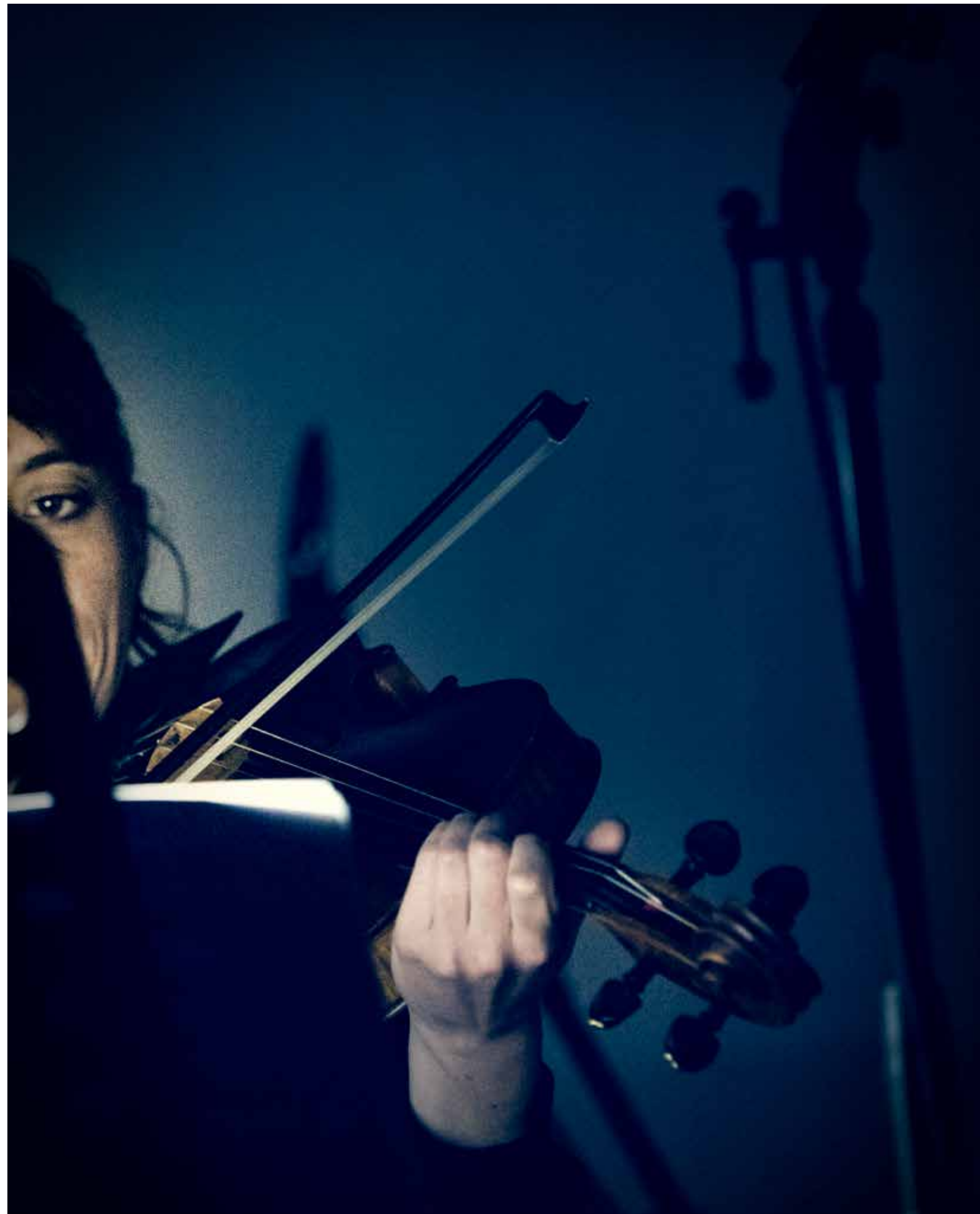




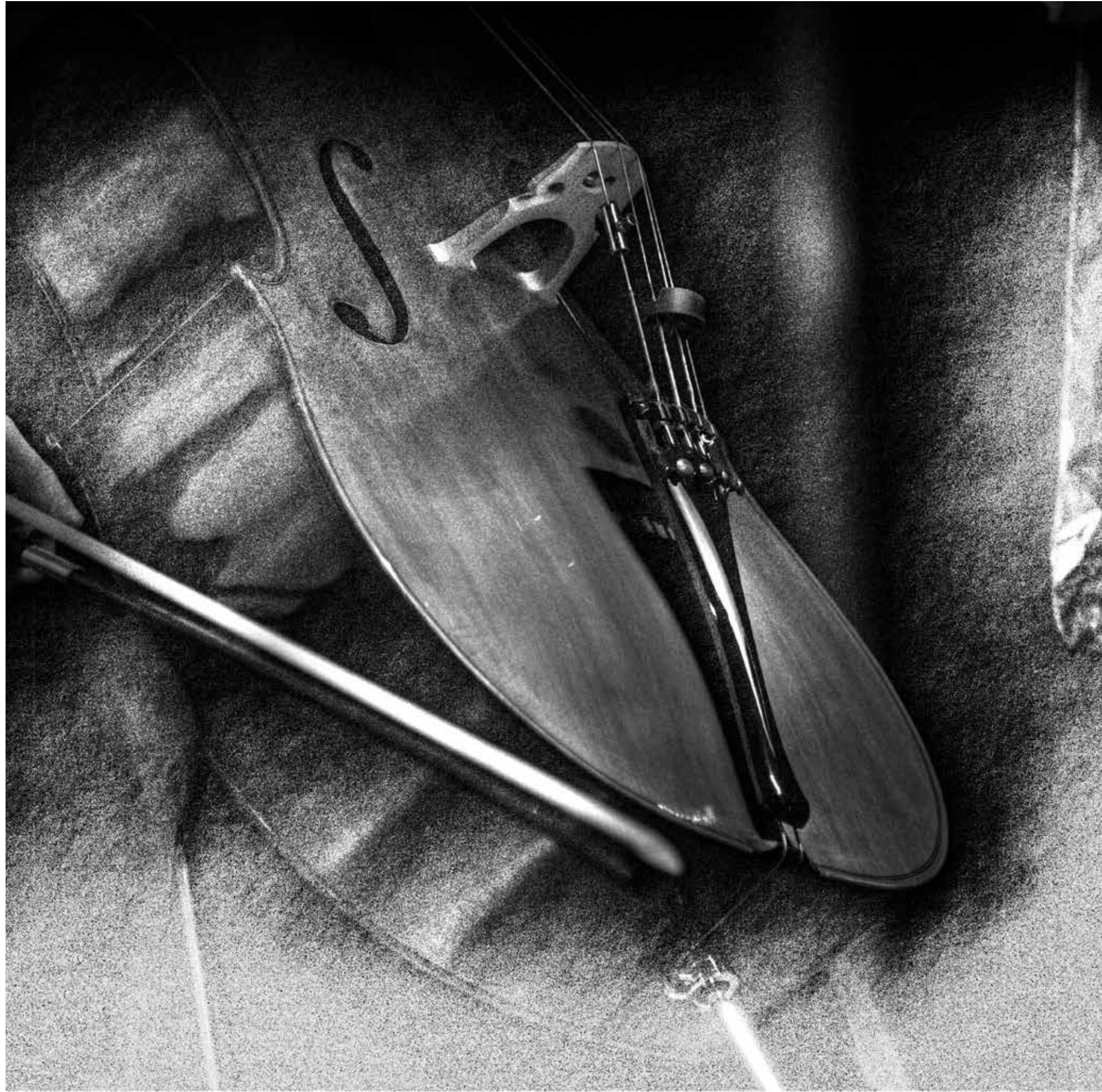




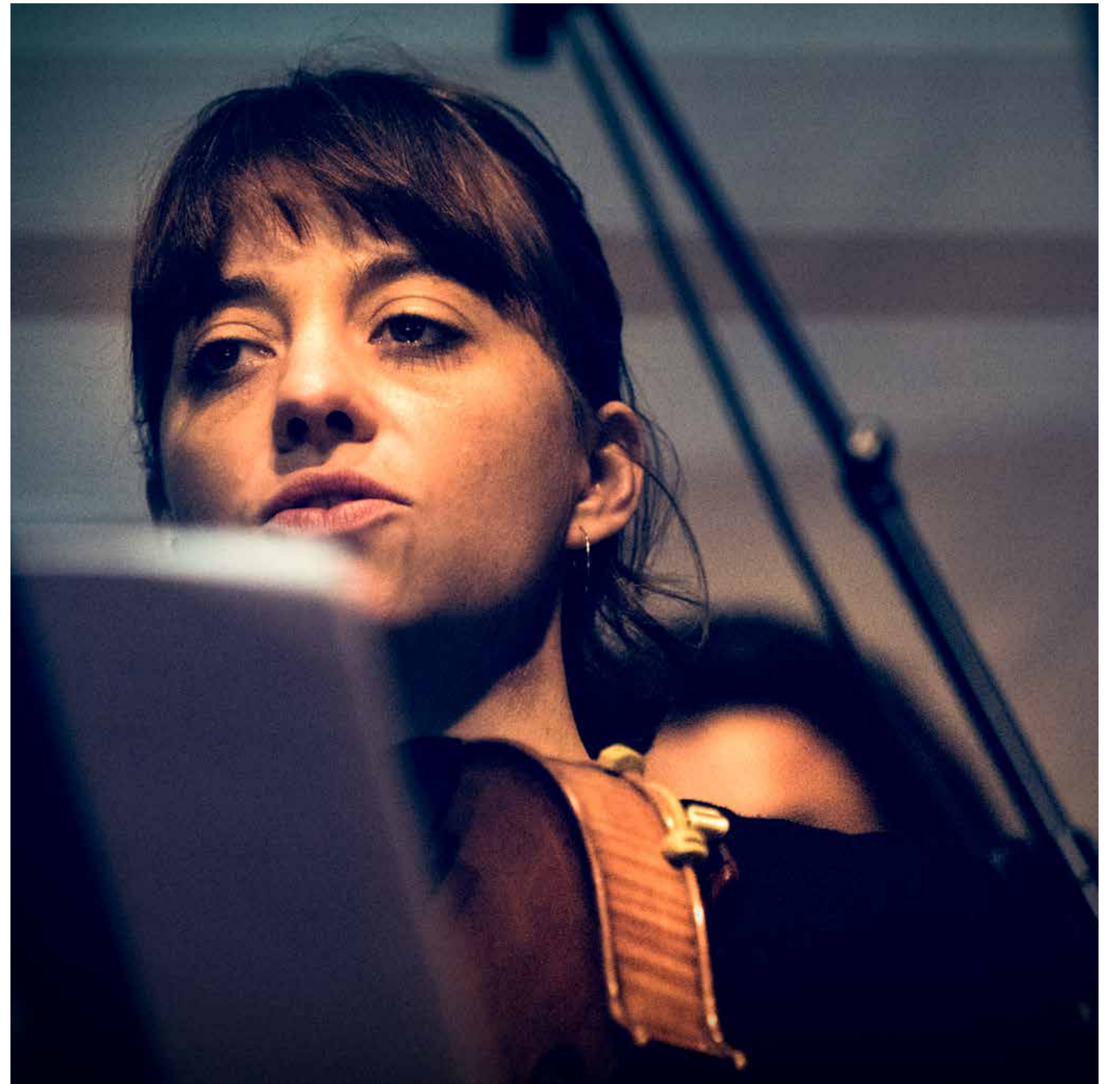
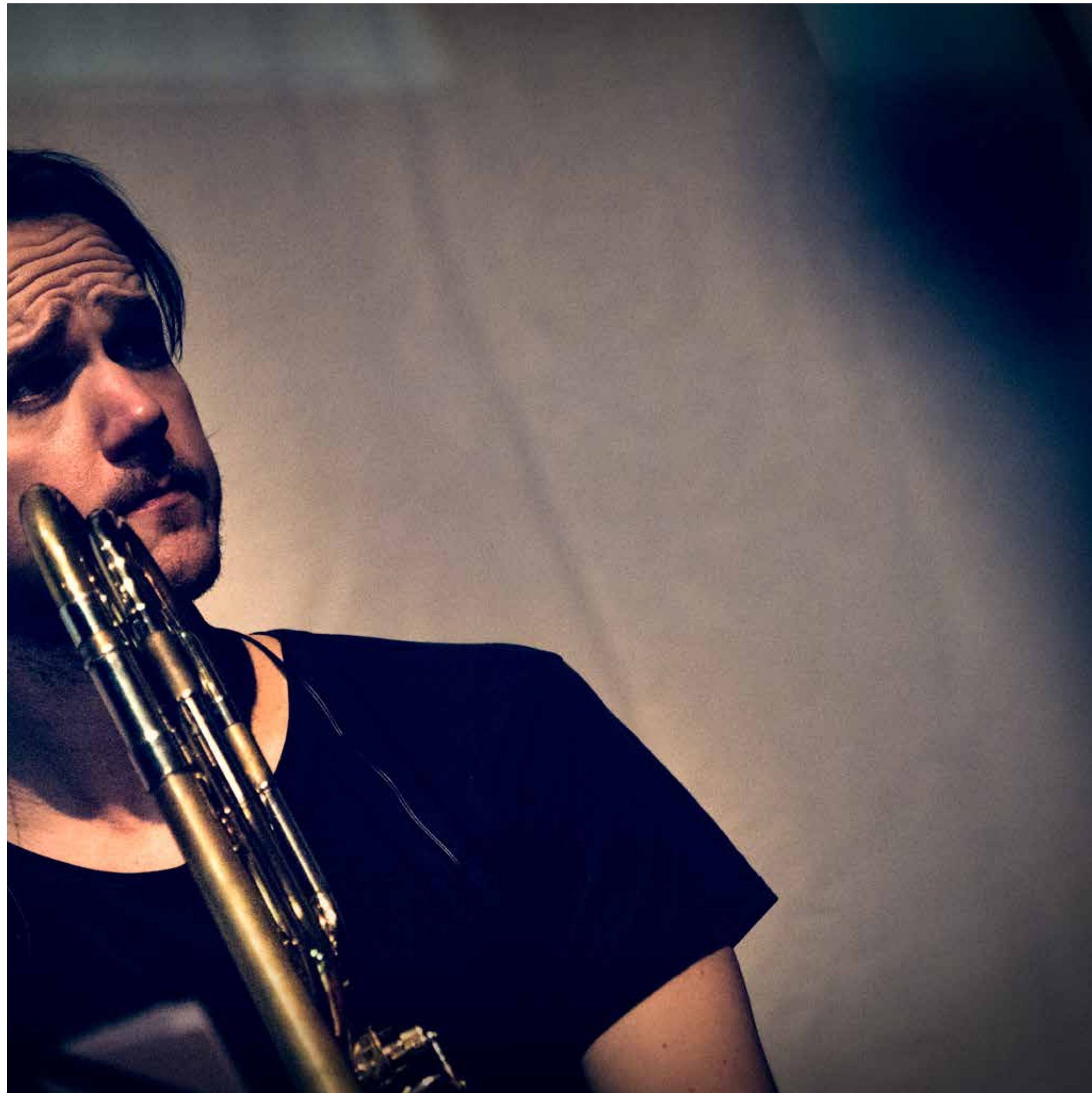




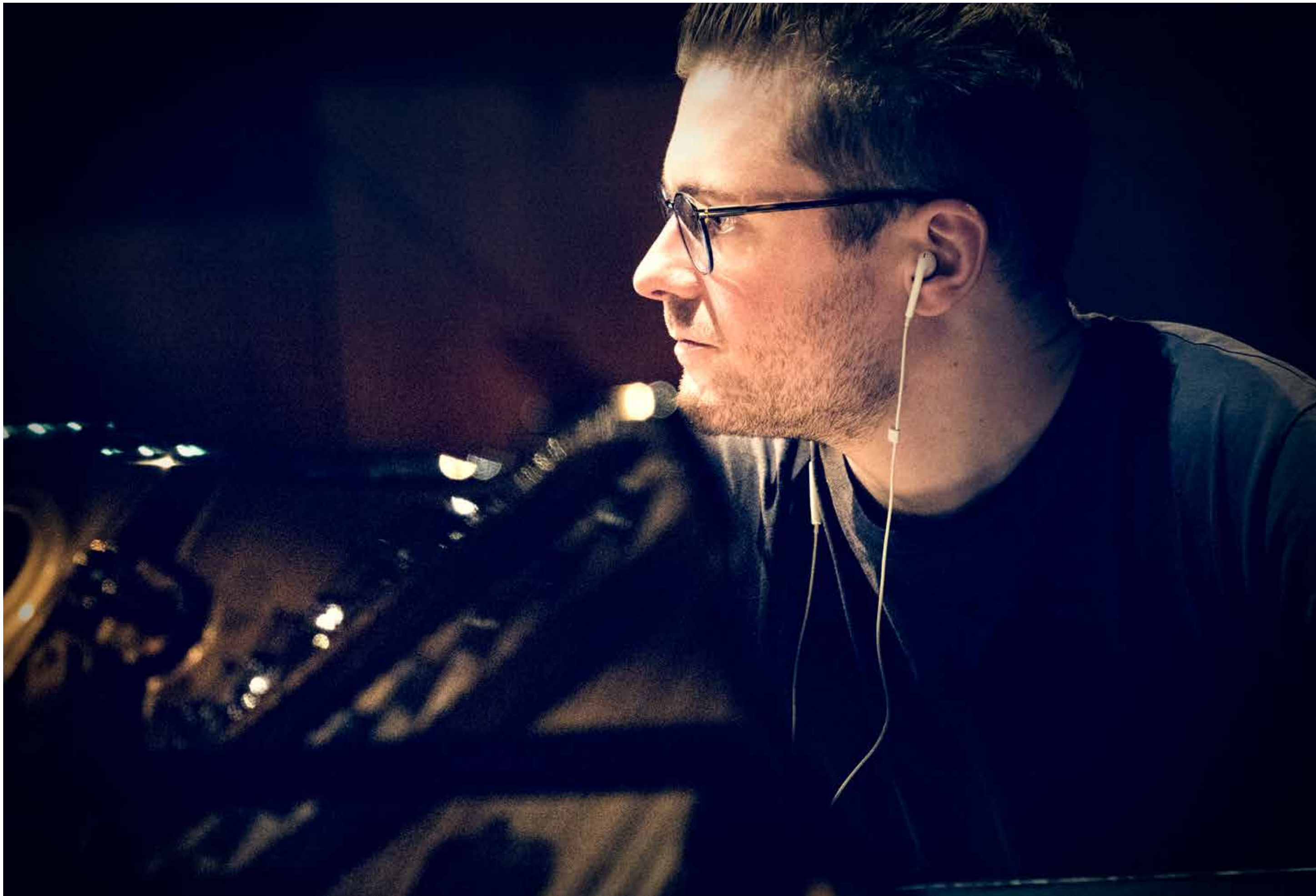


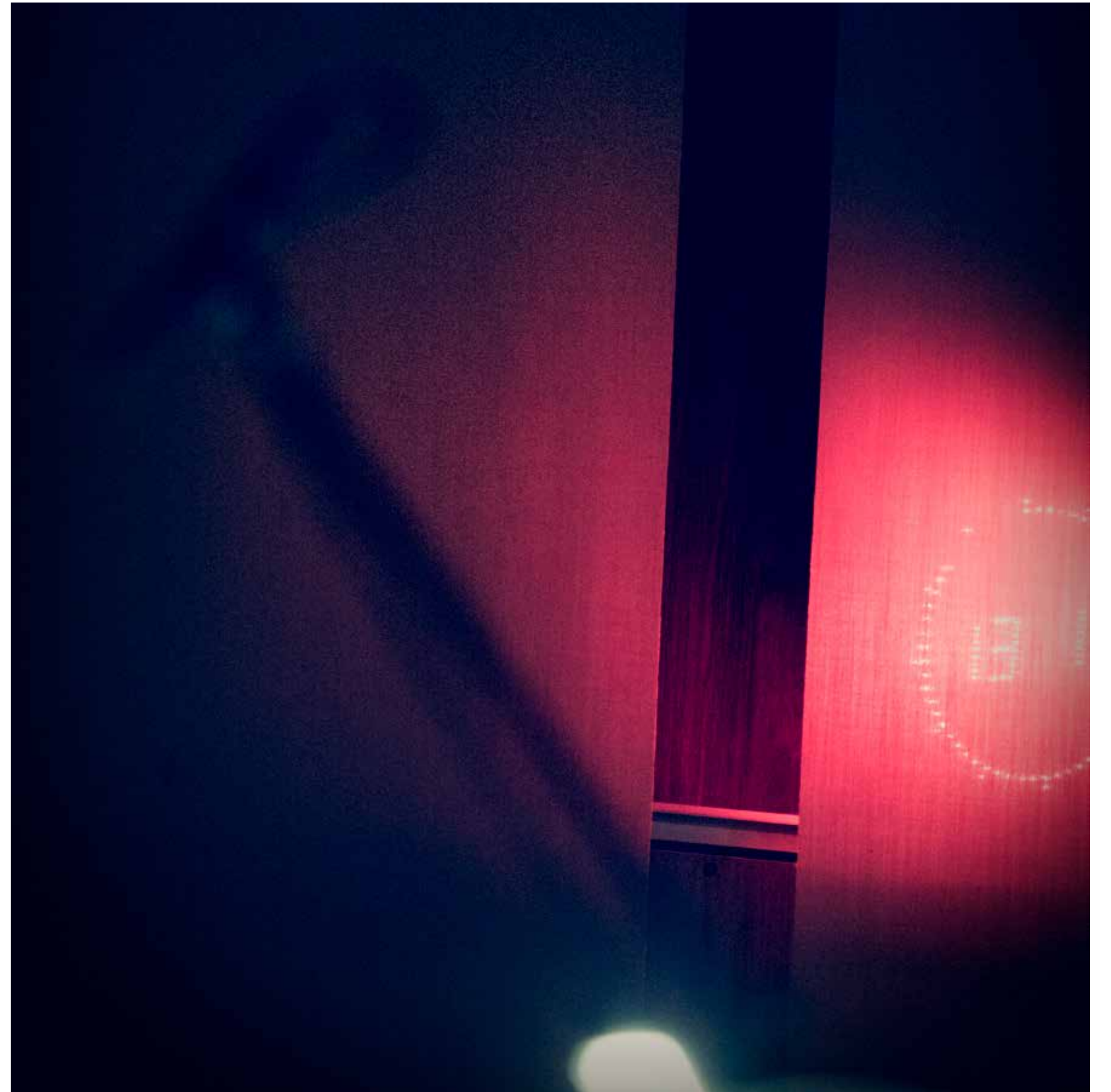




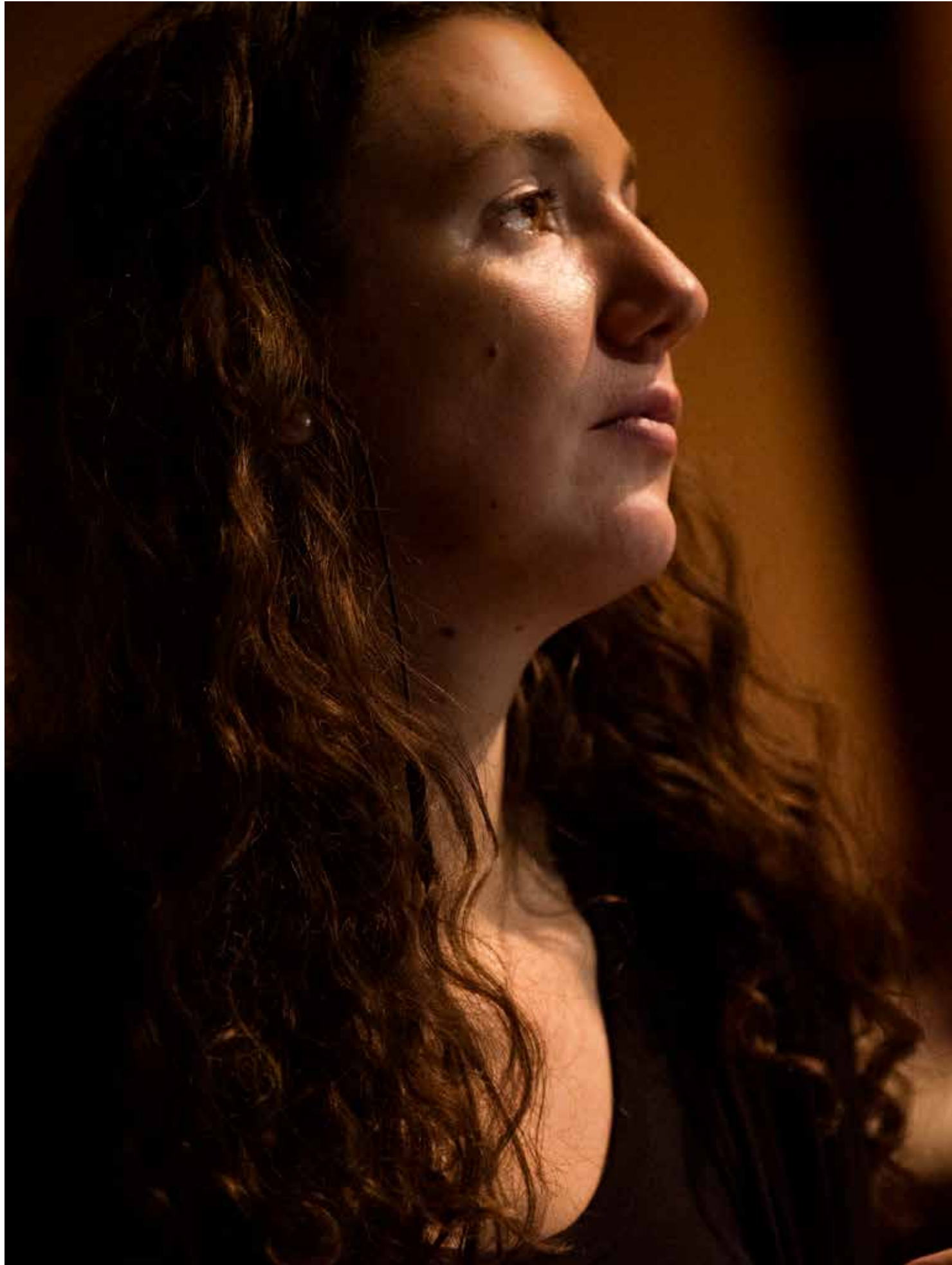


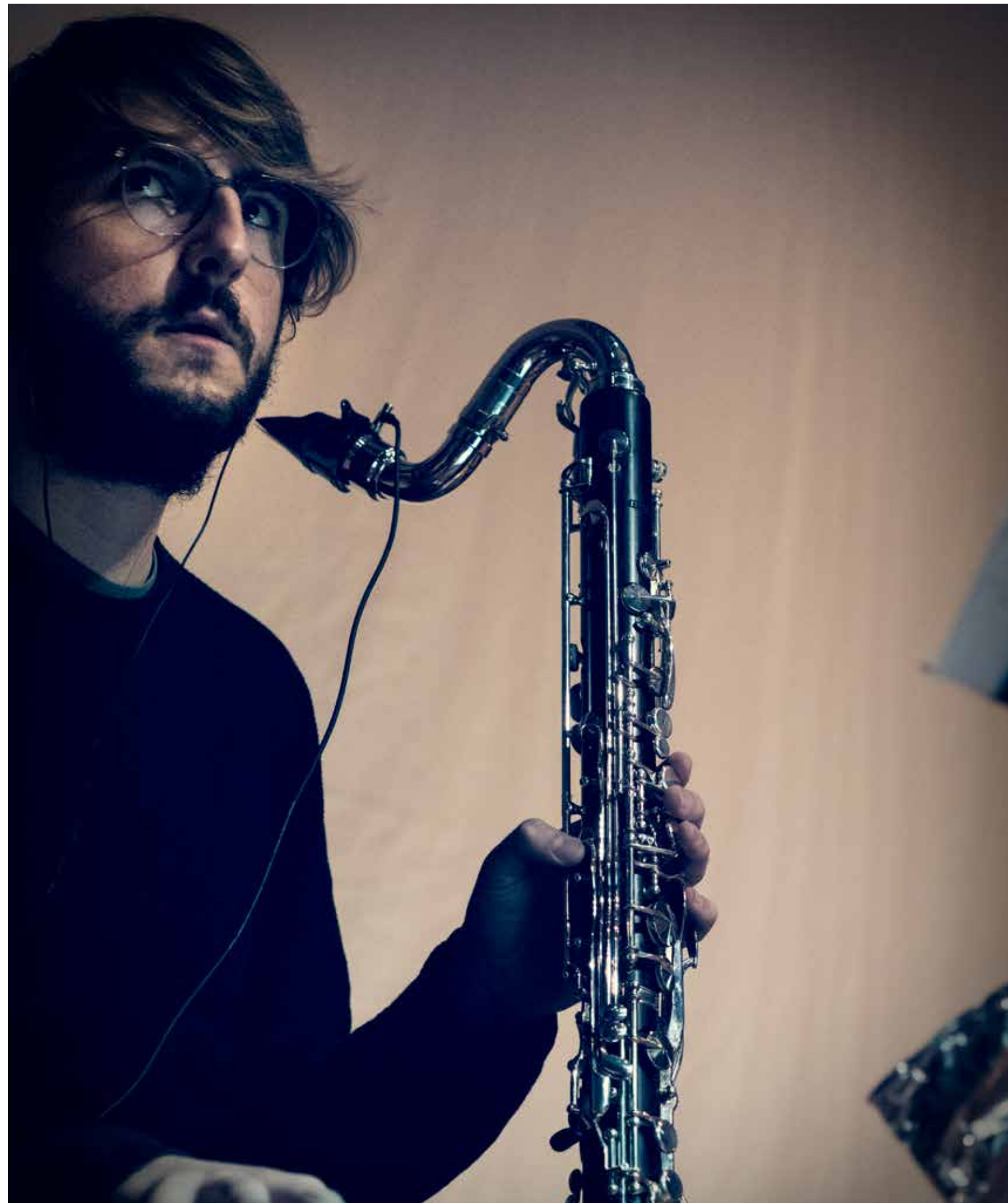






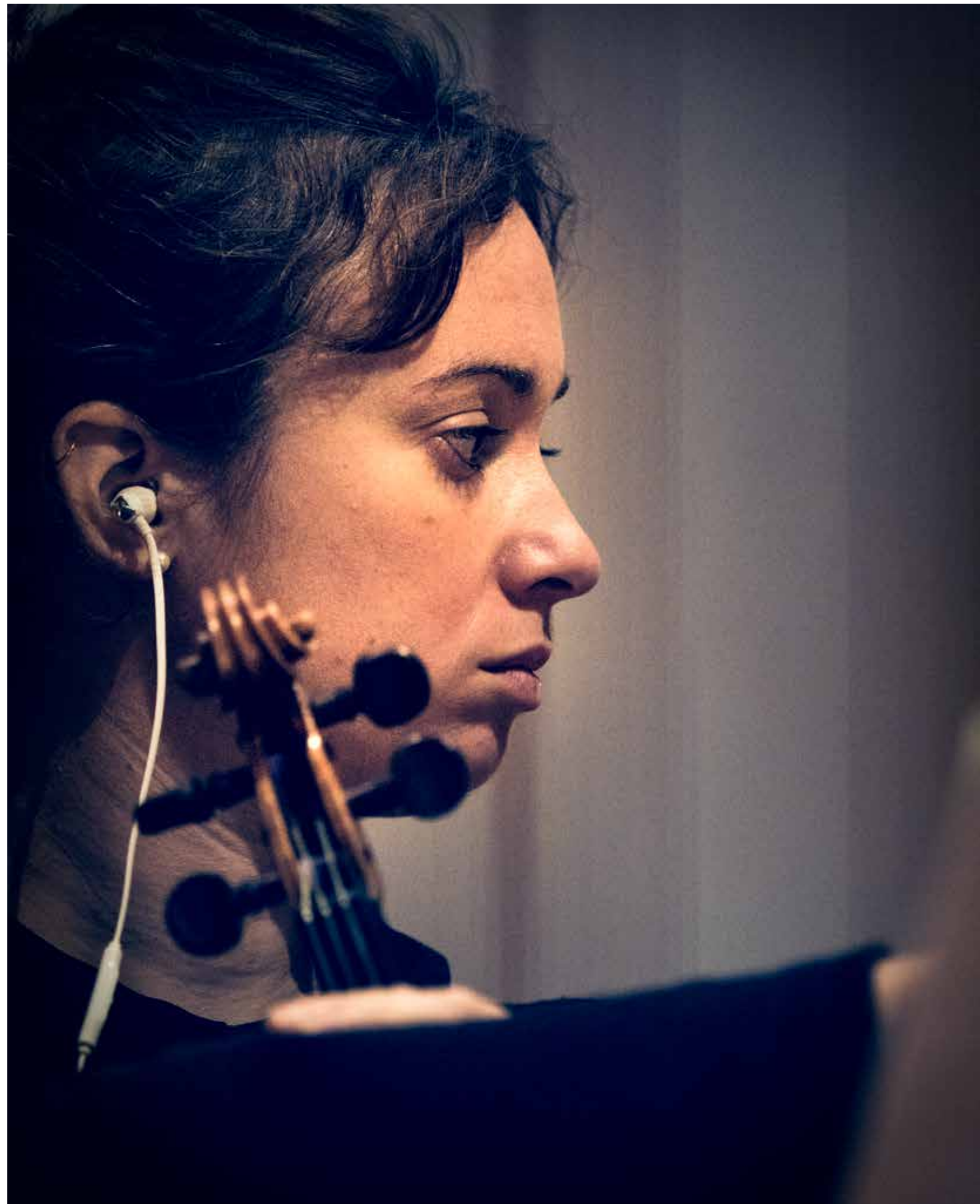












neu

TRANSFLEISCH

Piano

based on the audio-visual performance Transfleisch (by Maingardt and Ulrich)
In C

text: Rosi Ulrich
music: Sergej Maingardt

♩ = 120

A with bicycle tube

mp mf f p

Ped.

with bicycle tube

f p mp

SAMPLER
B1 - pitched

35

mp

